

# TECHNICAL DATA

## Profile

### Edging stripes for floating floors

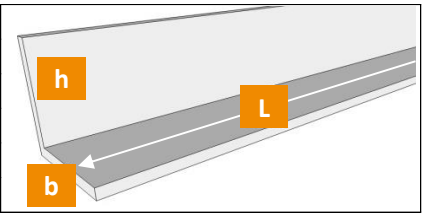
#### PROFYLE

##### Product description and Technical Specification

Edging stripes for floors screed made of polyethylene, grey colour, thickness ..... mm with adhesive on the two external sides. The dimensions are: base ..... cm, height ..... cm, density ..... kg/m<sup>3</sup>.



PHYSICAL CHARACTERISTICS	Unit	5/15	10/20	Tolerance
Nominal thickness	mm	6		± 1%
Length (L)	cm	150		± 1%
Height (h)	cm	15	20	± 0.5
Width (b)	cm	5	10	± 0.5
Density	kg/m <sup>3</sup>	31,5		± 1.5



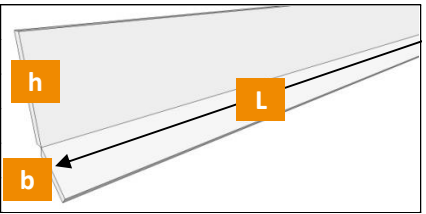
#### PROFYLE FLAT 5/15

##### Product description and Technical Specification

Acoustic Insulation strip available in rolls made of 6 mm thickness made of polyethylene grey colour, 22-25 kg/m<sup>3</sup> density. It is flat with adhesive, pre-cut on the corner line in order to facilitate the strip bending . Base 5 cm, height 15 cm



PHYSICAL CHARACTERISTICS	Unit	FLAT 5/15	Tolerance
Nominal thickness	mm	6	± 1%
Length (L)	cm	5000	± 1%
Height (h)	cm	15	± 0.5
Width (b)	cm	5	± 0.5
Density	kg/m <sup>3</sup>	23,5	± 1.5



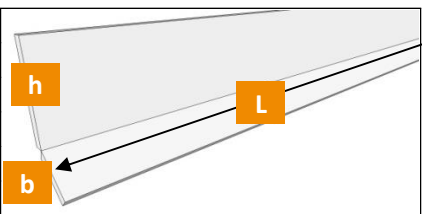
#### PROFYLE FLAT 5/15 RA

##### Product description and Technical Specification

Acoustic Insulation strip available in rolls made of 6 mm thickness made of polyethylene grey colour, 22-25 kg/m<sup>3</sup> density. It is flat with adhesive, pre-cut on the corner line in order to facilitate the strip bending . Base 5 cm, height 15 cm; equipped with a band made of polyethylene for the overlap of heating panels.



PHYSICAL CHARACTERISTICS	Unit	FLAT 5/15 RA	Tolerance
Nominal thickness	mm	6	± 1%
Length (L)	cm	5000	± 1%
Height (h)	cm	15	± 0.5
Width (b)	cm	5	± 0.5
Density	kg/m <sup>3</sup>	23,5	± 1.5



The suggestions and technical information given above represent our knowledge regarding the properties and the product's uses. ISOLGOMMA reserve the right to modify or update this data without prior notice. This document is the property of ISOLGOMMA and all rights are therefore reserved

# TECHNICAL DATA

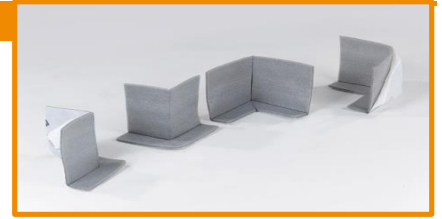
# Profile

## Edging stripes for floating floors

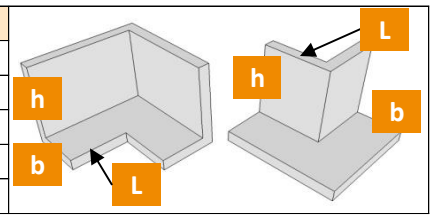
### PROFYLE CORNER

#### Product description and Technical Specification

Acoustic Insulation strip available in rolls made of 6 mm thickness made of polyethylene grey colour, 22-25 kg/m<sup>3</sup> density. It is flat with adhesive, pre-cut on the corner line in order to facilitate the strip bending. Base 5 cm, height 15 cm



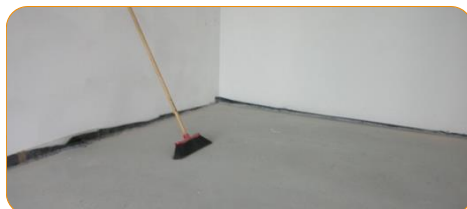
PHYSICAL CHARACTERISTICS	Unit	90°	270°	Tolerance
Nominal thickness	mm	6		± 1%
Length (L)	cm	10		± 1%
Height (h)	cm	150		± 0.5
Width (b)	cm	5		± 0.5
Density	kg/m <sup>3</sup>	23,5		± 1.5



TECHNICAL CHARACTERISTICS	Norm	Unit	Profile Line	Tolerance
Colour			grey	
Dynamic stiffness for dry application <sup>(2)</sup>	UNI EN 29052/1	MN/m <sup>3</sup>	36	± 2
Thermal conductivity coefficient (λ)	UNI EN 12667	W/m <sup>2</sup> K	0,035	
Fire resistance	2000/147/CE	Class	F	

<sup>(2)</sup> Measurement executed in deviation from norm EN 29052-1, without applying plaster on the test piece

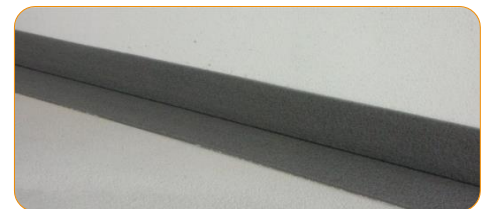
### INSTALLATION INSTRUCTIONS



Clean the applying surfaces from dirty and sharp parts



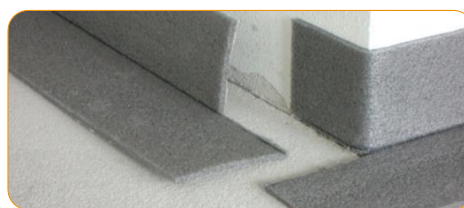
Remove the protection film



Glue the strip on both floor and wall surfaces by the external profile strip surfaces



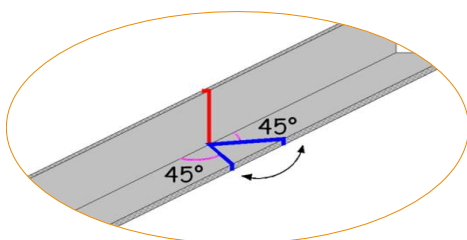
Insulate the acute corners with the "Profile" strip by cutting it as shown in the drawing.



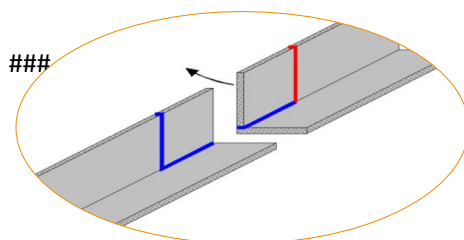
Insulate the obtuse corners with the "Profile" strip by cutting it as shown in the drawing.



Apply the Profile all along the walls room perimeter, as shown in the drawing



Cut along the blue line



Cut along the red line

