



FOAMGLAS® FLOOR BOARD F

Page: 1

Date: 15.04.2013

Supersedes: 01.02.11

www.foamglas.com



FOAMGLAS® FLOOR BOARD F consists of FOAMGLAS® slabs bonded together. Both sides of the insulation board are lined with a glass fibre facing, the top side is red, the bottom side is white.

Form of delivery (content per package)

length x width [mm]	1200 x 600						
thickness [mm]	40	50	60	70	80	90	100
units	6	5	4	4	3	3	3
square metre [m ²]	4.32	3.60	2.88	2.88	2.16	2.16	2.16

length x width [mm]	1200 x 600						
thickness [mm]	110	120	130	140	150	160	
units	2	2	2	2	2	2	
square metre [m ²]	1.44	1.44	1.44	1.44	1.44	1.44	

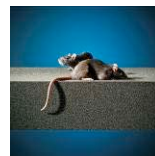
Other dimensions and thicknesses are available on request.

General FOAMGLAS® Cellular Glass Insulation characteristics

<p>Description</p> <p>Reaction to fire (EN 13501-1)</p> <p>Service temperature limits</p> <p>Water vapour resistance (EN ISO 10456)</p> <p>Hygroscopicity</p> <p>Capillarity</p> <p>Melting point (cf DIN 4102-17)</p> <p>Thermal expansion coefficient (EN 13471)</p> <p>Specific heat (EN ISO 10456)</p> <p>FOAMGLAS® characteristics</p>	<p>: FOAMGLAS® Insulation is manufactured from specially graded recycled glass (≥ 60%) and natural raw materials which are available in abundant supply (sand, dolomite, lime...). The insulation is totally inorganic, contains no ozone depleting propellants, flame resistant additives or binders. Without VOC or other volatile substances.</p> <p>: Core material complying with Euroclass A1, non-combustible, no toxic fumes</p> <p>: from -265°C to +430°C</p> <p>: $\mu = \infty$</p> <p>: zero</p> <p>: zero</p> <p>: >1000 C°</p> <p>: $9 \times 10^{-6} \text{ K}^{-1}$</p> <p>: 1000 J/(kg·K)</p>
---	--



Waterproof



Resistant to attack



High compressive strength



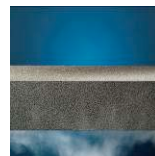
Acid resistant/chemical resistant



Easy cut to shape



Non-combustible



Impervious to water vapour



Dimensionally stable



Ecological



Radon protection



FOAMGLAS® FLOOR BOARD F

Page: 2

Date: 15.04.2013

Supersedes: 01.02.11

www.foamglas.com

1. Product characteristics according to EN 13167 ¹⁾

Density (± 10%) (EN 1602)	: 165 kg/m ³
Thickness (EN 823) ± 2 mm	: from 40 up to 160 mm
Length (EN 822) ± 5 mm	: 1200 mm
Width (EN 822) ± 2 mm	: 600 mm
Thermal conductivity (EN ISO 10456)	: $\lambda_D \leq 0.050$ W/(m·K)
Reaction to fire (EN 13501-1)	: Euroclass E (Core material Euroclass A1)
Point load (EN 12430)	: PL \leq 1.0 mm
Compressive strength (EN 826 annexe A)	: CS \geq 1600 kPa
Bending strength (EN 12089)	: BS \geq 550 kPa
Tensile strength (EN 1607)	: TR \geq 150 kPa

¹⁾ CE-marking ensures conformity with the mandatory essential requirements of CPD as mentioned in EN 13167; within the CEN Keymark certification all mentioned characteristics are certified by an empowered, notified and accredited 3rd party.

2. Additional product data

Thermal diffusivity at 0°C	: 3.5×10^{-7} m ² /sec
λ_D -value and mean t° range (EN ISO 13787)	: + 35 °C \leq 0.054 W/(m·K)
Product Conformity BS EN 13167 : 2001	: Nr. CL 07020029
BRE Green Guide Rating	: B
Green Spec® Listed	: yes

3. Applications

Highest compressive strength requirements:

- Insulation under
- floors
 - foundation slabs