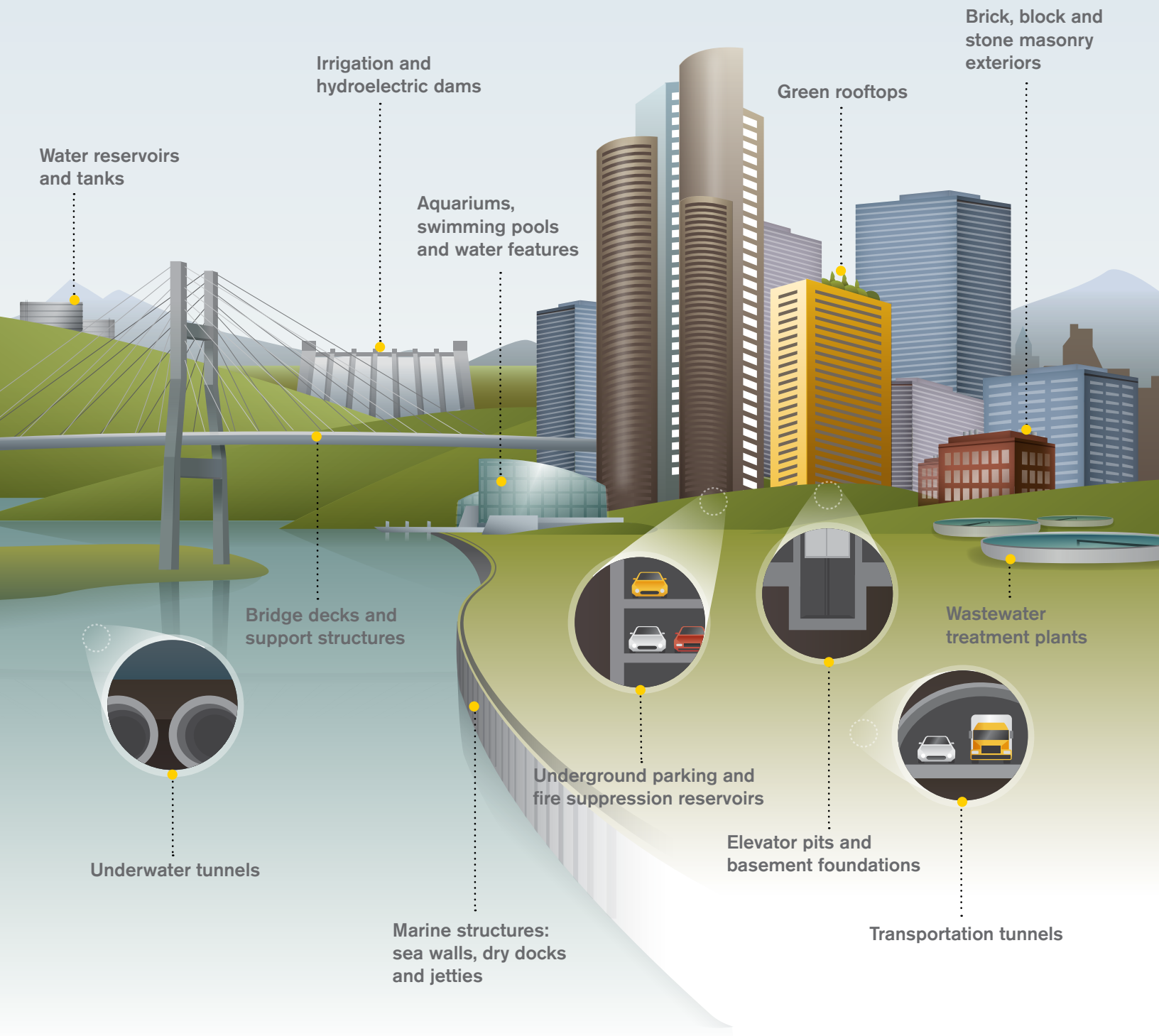


CONCRETE WATERPROOFING SOLUTIONS GUIDE



BE SURE. BE KRYTON.



WE TAKE THE RISK OUT OF CONCRETE WATERPROOFING



KRYTON

THE SCIENCE OF **KRYSTOL**[®] TECHNOLOGY



Kryton's Krystol concrete waterproofing products are either added directly to the concrete mix or applied to the surface of concrete. Once added, Krystol chemically reacts with water and un-hydrated cement particles to form insoluble needle-shaped crystals. These crystals fill capillary pores and micro-cracks in the concrete to block pathways for water and waterborne contaminants. Krystol will continue to give the concrete structure a self-sealing ability. If water is re-introduced through a rise in hydrostatic pressure or through hairline cracks, Krystol will initiate further crystallization to ensure permanent waterproof protection. Krystol works for the life of the concrete.

Kryton's innovative range of Krystol concrete waterproofing products will help you build quality, durability, and cost-effectiveness directly into the concrete. Krystol waterproofing systems create completely watertight concrete structures that are self-sealing and able to withstand hydrostatic pressure for the life of your structure. Krystol technology can potentially save you money in reduced labor and maintenance costs, leaving you with a durable and resilient structure for the long-term.

PROVIDING THE MOST EFFECTIVE CONCRETE WATERPROOFING SYSTEMS

TABLE OF CONTENTS

The Science of Krystol® Technology.....	2
-----------------------------------------	---

WATERPROOFING ADMIXTURES

Krystol Internal Membrane™ (KIM®).....	4
Externally Applied Membranes VS KIM Internal Waterproofing.....	5
Crystalline Admixtures Are Not The Same.....	6
Krystol Mortar Admixture™	7

SURFACE APPLIED WATERPROOFING

Krystol Broadcast™	8
Krystol T1® & T2® Waterproofing System	9
Hydrostop™ Sealer	10

CONSTRUCTION JOINTS AND DETAILS

Krystol Waterstop System	11
Krystol Waterstop Grout™	12
Krystol Waterstop Treatment™	12
Krytonite™ Swelling Waterstop.....	13
Kryton's Crack Inducing Waterstop.....	13
How It Works	14

CONCRETE REPAIR

Krystol® Leak Repair System.....	16
Krystol Bari-Cote™	18

RESTORE AND PROTECT

Hydrostop Restore & Protect System™	19
-------------------------------------------	----

KRYTON HAS YOUR SOLUTION

Warranty.....	20
Industry Expertise.....	20
Application Chart	21

KRYSTOL INTERNAL MEMBRANE™ (KIM®)

Krystol Internal Membrane (KIM) is a hydrophilic crystalline admixture used to create permanently waterproof concrete.

KIM lowers the permeability of concrete and is used in place of externally applied waterproofing membranes. By stopping the transmission of water through concrete, KIM adds durability and longevity to concrete by protecting it against chemical attack and corrosion of reinforcing steel.

How It Works

KIM contains Krystol technology. When added to concrete, Krystol chemically reacts with water and un-hydrated cement particles to form insoluble needle-shaped crystals that fill capillary pores and micro-cracks in the concrete and block the pathways for water and waterborne contaminants. Any moisture introduced over the lifespan of the concrete will initiate crystallization, ensuring permanent waterproofing protection.



Product Benefits

- Permanent and reliable hydrostatic waterproofing solution
- Shortens construction schedules
- Reduces initial and long-term waterproofing costs
- Self-seals micro-cracks for the life of the concrete
- Increases longevity of reinforced concrete
- NSF 61-certified for potable water applications

Packaging

Mixer-ready bags in custom sizes to match your mix design
25 kg (55 lbs) resealable pails



KIM is used to integrally waterproof and increase the durability of concrete subject to water exposure and hydrostatic pressure:

- Below grade parking
- Basements
- Sewage plants
- Swimming pools
- Dams
- Foundation walls
- Footings
- Slabs
- Pits
- Water containment tanks
- Canals



Marina Bay Sands, Singapore



Whitney Museum, NYC, New York



Line 3 Metro, Monterrey, Mexico

EXTERNALLY APPLIED MEMBRANES VS KIM INTERNAL WATERPROOFING

Kryton's Krystol Internal Membrane (KIM) crystalline admixture has been outperforming externally applied membranes for over 33 years. From the simple process of adding KIM to the concrete at the time of batching to improving the concrete's ability to self-seal, KIM projects require less maintenance and last longer than those using externally applied membranes for waterproofing.



PROVEN WATERPROOFING PERFORMANCE

KIM has been used successfully in high-risk projects throughout the world.

- Withstands 460 ft. (200 PSI) of hydrostatic pressure
- Cannot be punctured like externally applied membranes because it is added to the concrete mix
- Permanently self-seals micro-cracks



SHORTENED CONSTRUCTION SCHEDULES

KIM is an internal crystalline admixture that turns concrete into a waterproof barrier.

- Added directly to the concrete during the batching process for easy and efficient installation
- Avoid delays due to weather, scheduling a sub-trade, or applying an externally applied product
- Able to backfill sooner



IMPROVES DESIGN CREATIVITY

KIM eliminates the need for an externally applied membrane.

- Earn up to 6 valuable LEED points
- Maximizes building footprint and freedom of design
- The only way to effectively waterproof blind-wall applications



SAVES MONEY

KIM reduces waterproofing costs for concrete projects.

- Reduces maintenance and repair of concrete over its service life
- Increases your revenue with a larger building footprint and reduces costs with a shorter construction schedule
- Extends the service life of a structure by creating durable, long-lasting concrete

Building sustainably means building for the long-term. To do so, you must create durable concrete by using innovative products like KIM.

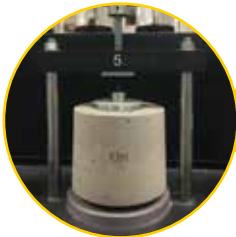
CRYSTALLINE ADMIXTURES ARE NOT THE SAME

Crystalline admixtures classified as Permeability Reducing Admixtures for Hydrostatic conditions (PRAH) are not the same. Some PRAH admixtures consistently produce far better results. Understanding the differences ensure you have made an informed decision resulting in watertight structures for life.



Krytol Technology is **CHEMICALLY UNIQUE**

- KIM reacts with un-hydrated cement in concrete and continues to enable the growth of more crystals, ensuring long-term protection
- Long needle-shaped crystals grow deeper, fill smaller spaces, and resist more water pressure
- KIM is the original crystalline admixture and designed differently from competitors



KIM has **SUPERIOR PERFORMANCE**

- Highest level of permeability reduction and most dependable self-sealing performance
- Best dry shrinkage and restrained shrinkage crack reduction
- Only admixture proven to protect against corrosion of reinforced steel, as evidenced within the University of Hawaii's 10-year Corrosion Study



The **COMPLETE WATERPROOFING SYSTEM**

- Every construction detail covered to create a watertight structure
- Entire waterproofing system comes from one manufacturer, ensuring ease of use and expertise
- Kryton is a one stop shop for all your concrete waterproofing and durability needs



Kryton has the **MOST EXPERIENCE**

- Inventor of the world's first crystalline admixture
- Offer the best warranty in category with many projects outliving their original warranties
- Successful waterproofing of high-risk projects around the world

Make an informed choice. Only KIM can reliably waterproof your concrete structure for life.

KRYSTOL MORTAR ADMIXTURE™ (KMA)

Krystol Mortar Admixture (KMA) is a hydrophilic crystalline admixture used to provide long-term protection of masonry mortars and concrete masonry units against water and waterborne contaminants by reducing permeability and absorption of the mortar.

KMA simplifies installation by removing the need for surface applied sealers and is incorporated easily into existing masonry and stucco products and application processes. KMA provides superior waterproofing performance that lowers building maintenance and repair costs.

How It Works

KMA contains Krystol technology. When added to cementitious mortars or concrete masonry units, Krystol chemically reacts with water and un-hydrated cement particles to form insoluble needle-shaped crystals that fill capillary pores and micro-cracks in the concrete and block the pathways for water and waterborne contaminants. Any moisture introduced over the lifespan of the concrete will initiate crystallization, ensuring permanent waterproofing protection.

Product Benefits

- Reduces water permeability and absorption
- Resists weathering
- Improves workability
- Reduces shrinkage & cracking
- Self-seals hairline cracks
- NSF 61-certified for potable water applications

Packaging

15 kg (33 lbs) resealable pails



KMA provides permanent protection for:

- Rendering and plastering mortar (including stucco and other thin topping mixes) over concrete masonry walls or other prepared substrates
- Masonry mortar (mortar that goes between the masonry units)
- Concrete masonry units (bricks and blocks when they are manufactured)



American Dream, Changsha, China



Crowne Plaza Today Hotel, Gurgaon, Haryana, India



Royal Mills Riverpoint Apartments, USA

KRYSTOL BROADCAST™

Krystol Broadcast is a dry-shake crystalline waterproofing treatment that transforms horizontal concrete applications into a permanent waterproofing barrier.

Krystol Broadcast is troweled in during the final finishing to become an integral part of the concrete that replaces the need for conventional membrane waterproofing systems. Krystol Broadcast features a unique fugitive dye to ensure uniform distribution and produces a smooth finish suitable for non-air entrained slabs.

How It Works

Krystol Broadcast contains Krystol technology. When applied to concrete, Krystol chemically reacts with water and un-hydrated cement particles to form needle-shaped crystals that fill capillary pores and micro-cracks in the concrete and permanently block the pathways for water and waterborne contaminants. Any moisture introduced over the lifespan of the concrete will initiate crystallization, ensuring permanent waterproofing protection.

Product Benefits

- Permanent and reliable hydrostatic waterproofing solution
- Integral to the concrete; Krystol Broadcast does not wear away or deteriorate
- Fugitive dye ensures uniform distribution
- Self-seals micro-cracks for the life of the concrete
- Increases longevity of reinforced concrete
- NSF 61-certified for potable water applications

Packaging

25 kg (55 lbs) resealable pails



Krystol Broadcast produces a smooth finish and is used to integrally waterproof and add durability to concrete slabs that will be power-toweled during finishing:

- Slabs on-grade, below-grade, or elevated
- Parking structures
- Marine structures
- Reservoirs (NSF 61 Certified)
- Water treatment plants
- Pits
- Warehouse & commercial floors
- Basements



Tung Ho Steel Plant, Taiwan

Tung Ho Steel Plant, Taiwan

Tung Ho Steel Enterprise is a major steel manufacturing company and they know that steel and water do not mix. When they were constructing their new plant they chose various Kryton products to target specific problem areas of the plant. To prevent water ingress from the elements they used Krystol T1 & T2 and Krystol Internal Membrane. As well, Krystol Broadcast was applied on the positive side of the driveway which covered over 500 square meters (597 square yards). With Kryton's help, the plant was able to quickly and successfully open its doors. With a complete waterproofing system in place, the Tung Ho Steel plant will be permanently protected from water ingress.

KRYSTOL T1® & T2® WATERPROOFING SYSTEM

Krystol T1 & T2 Waterproofing System is a surface-applied crystalline slurry treatment that transforms new or existing concrete into a permanent waterproof barrier.

Krystol T1 & T2 Waterproofing System lowers the permeability of concrete and protects against the ingress of water and waterborne chemicals. It replaces the need for surface applied waterproofing membranes, and is often used in the remediation of failed membranes.

How It Works

Krystol T1 & T2 contains Krystol technology. When applied to concrete, Krystol chemically reacts with water and un-hydrated cement particles to form insoluble needle-shaped crystals that fill capillary pores and micro-cracks in the concrete and block the pathways for water and waterborne contaminants. Any moisture introduced over the lifespan of the concrete will initiate crystallization, ensuring permanent waterproofing protection.

Product Benefits

- Permanent and reliable waterproofing protection that can be applied to the positive or negative side
- Integral to the concrete; Krystol T1 & T2 does not wear or deteriorate
- Applied to new or existing concrete surfaces
- Self-seals micro-cracks for the life of the concrete
- Increases longevity and durability of reinforced concrete
- NSF 61-certified for potable water applications

Packaging

25 kg (55 lbs) resealable pails



Krystol T1 & T2 Waterproofing System is used to integrally waterproof and add durability to newly placed, as well as existing concrete of any age:

- Foundations
- Walls
- Elevated slabs and ramps
- Parking structures
- Water towers
- Bridge decks
- Water Containment Tanks (NSF 61 Certified)



Bharat Oman Refinery, Bina, India



Atlantis Hotel, Dubai, UAE



Futang Tunnel/Ying Wen Highway, Sichuan, China

HYDROSTOP™ SEALER

Hydrostop Sealer is a high-performance penetrating sealer used by itself to protect concrete, brick, mortar, and masonry from the damaging effects of water intrusion. It is a clear, water-based liquid that is sprayed or rolled onto horizontal or vertical surfaces. It does not affect appearance or breathability, and will not wear, fade, yellow, crack or peel.

How It Works

Hydrostop Sealer contains a unique blend of silane and siloxane compounds that chemically react with the silicates below the surface of the substrate to form an insoluble, water-repellent barrier.

Product Benefits

- Chemical reacts with silicates below the surface
- Forms an insoluble, water-repellent barrier
- Works better, lasts longer than conventional sealers
- Water-based
- Does not affect appearance or breathability
- Will not wear, fade, yellow, crack or peel

Packaging

18.9 L (5 US gallons) pails



*Hydrostop is Hydropeel™ in USA

Hydrostop Sealer is used to protect above grade structures from the damaging effects of water:

- Bridge decks and supports
- Parking structures
- Concrete, block or brick walls and chimneys
- Driveways, including exposed aggregate
- Sidewalks, patios, balconies, steps
- Concrete pavers and retaining walls
- Marine floats and docks
- Stucco walls
- Concrete roof tiles and unglazed floor tiles
- Asbestos cement
- Use to treat any masonry surface made from concrete, brick, mortar, grout, tile, terra-cotta, plaster, stone, and limestone



Channel M Building, Vancouver, Canada



Vancouver Public Library, Vancouver, Canada

KRYSTOL® WATERSTOP SYSTEM

The Krystol Waterstop System is the most versatile waterstop system on the market and is used to permanently waterproof concrete construction joints, pipe-penetrations, tie-holes, and control joints. Using this system in conjunction with Krystol Internal Membrane (KIM) provides a complete, fully integrated concrete waterproofing system for the life of your concrete structure.

The Krystol Waterstop system creates completely watertight concrete down to the last detail and routinely working where other waterstops system fail.

How It Works

The Krystol Waterstop System is comprised of Krystol Waterstop Grout, Krystol Waterstop Treatment, Krytonite Swelling Waterstop, and Kryton's Crack Inducing Waterstop. These products are used in a variety of ways to waterproof all construction joints and details found in concrete construction.

System Benefits

- Supports the complete crystalline waterproofing system
- Every construction detail is covered and waterproof
- Improved performance and reliability over competitors
- Design options based on project requirements
- Easy installation of products within the system
- NSF 61-certified for potable water applications



The Krystol Waterstop System is used to waterproof and protect construction joints and details where there is a risk of water penetration. Applications include:

- Static (non-moving) concrete-to-concrete joints
- Preplanned and unintended cold joints
- Crack control joints



Olympic Cauldron, Vancouver, Canada



CityCenter, Las Vegas, USA



Women and Children Hospital, Brunei Darussalam

KRYSTOL WATERSTOP GROUT™

Krystol Waterstop Grout is a crystalline grout used to create an internal or external waterstop at construction joints, pipe penetrations, tie-holes and control joints.

Krystol Waterstop Grout contains fiber reinforcements that reduce shrinkage and limit cracking. It is typically used in conjunction with Krystol Waterstop Treatment as part of the Krystol Waterstop System.

How It Works

Krystol Waterstop Grout contains Krystol technology. When applied to concrete, Krystol chemically reacts with water and un-hydrated cement particles to form insoluble needle-shaped crystals that fill capillary pores and micro-cracks in the concrete and block the pathways for water and waterborne contaminants. Any moisture introduced over the lifespan of the concrete will initiate crystallization, ensuring permanent waterproofing protection.

Product Benefits

- Multi-use – internal or external waterstop
- Permanent crystalline waterproofing and protection
- Crack resistant
- NSF 61 certified; safe for contact with potable water
- Durable; resistant to rain, foot traffic, and shifting

Packaging

25 kg (55 lbs) resealable pails



KRYSTOL WATERSTOP TREATMENT™

Krystol Waterstop Treatment is a cementitious crystalline slurry that is applied to horizontal and vertical construction joints to provide additional waterproofing protection, and protect rebar from corrosion.

Krystol Waterstop Treatment is used in conjunction with Krystol Waterstop Grout and/or Krytonite Swelling Waterstop, as part of the Krystol Waterstop System, wherever water penetration through static concrete-to-concrete joints is a concern. Krystol Waterstop Treatment can also be used by itself as a dampproofing treatment.

How It Works

Krystol Waterstop Treatment contains Krystol technology. When applied to concrete, Krystol chemically reacts with water and un-hydrated cement particles to form insoluble needle-shaped crystals that fill capillary pores and micro-cracks in the concrete and block the pathways for water and waterborne contaminants. Any moisture introduced over the lifespan of the concrete will initiate crystallization, ensuring permanent waterproofing protection.

Product Benefits

- Easy to install
- Provides a permanent waterstop treatment as part of the Krystol Waterstop System
- Durable; resistant to rain and foot traffic once hardened
- Safe for contact with potable water; certified to NSF/ANSI Standard 61
- Easy to inspect; distinctive yellow color increases reliability and quality control during installation

Packaging

25 kg (55 lbs) resealable pails



KRYTONITE™ SWELLING WATERSTOP

Krytonite Swelling Waterstop is a synthetic rubber waterstop that uses swelling pressure to seal concrete construction joints and stop water.

Krytonite has superior swelling pressure and performance that stops water better than bentonite and competing swelling waterstops. It is suitable for use with regular ground water, as well as salt and sulfate contaminated water. Krytonite is extremely durable and will not deteriorate over time. It can be used by itself as a single protection waterstop, or with other components of the Krystol Waterstop System as a double or triple protection option for construction joints.

How It Works

Krytonite Swelling Waterstop is adhered using Krytonite Adhesive at or near the center of the construction joint to the clean, dry, concrete surface. For added long-term protection of the outboard reinforcing steel, apply Kryton Waterstop Treatment to the concrete surface first and then adhere Krytonite Swelling Waterstop to the treatment. Once this is completed, pour the concrete over the Krytonite Swelling Waterstop making it part of the concrete structure.

Product Benefits

- Resistant to high-hydrostatic pressure
- Extremely durable – will not deteriorate even with repeated wetting and drying cycles
- Innovative trapezoid shape resists dislodgement and allows for better concrete consolidation
- Controlled swelling allows for concrete strength development in advance of swelling pressure
- High-performance swelling – even in contaminated or salt water

Packaging

1 box 20x5 mm (approx.. 0.8" x 0.2") – 50 meters, 5x10m rolls



KRYTON'S CRACK INDUCING WATERSTOP

Kryton's Crack Inducing Waterstop is specially engineered to produce a waterproof crack control joint.

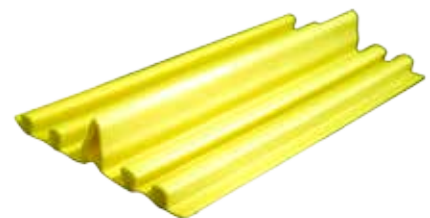
Used as part of the Krystol Waterstop System and in conjunction with Krystol Waterstop Grout, Kryton's Crack Inducing Waterstop is resistant to waterborne chemicals and is perfect for blindside applications where access is limited. It is placed in a predetermined location to isolate cracking to a controlled area in order to eliminate water entry through uncontrolled shrinkage cracking.

How It Works

Kryton's Crack Inducing Waterstop is fastened to the concrete form or shoring wall. A keyway is measured and formed directly opposite the waterstop. After the concrete is placed, a controlled crack develops from the Crack Inducing Waterstop through to the keyway. Krystol Waterstop Grout is then tightly packed in the keyway for added protection.

Product Benefits

- Accurate placement of control joints
- Extremely durable
- Control concrete cracks; decreasing maintenance costs

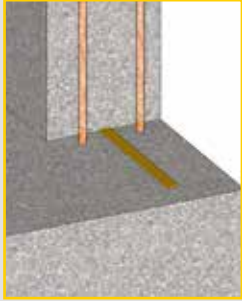


KRYSTOL WATERSTOP SYSTEM

HOW IT WORKS

Construction Joints

SINGLE PROTECTION



Single Protection: Improved waterproofing performance over common swelling waterstops

Superior swelling pressure and performance that stops water better than bentonite and competing swelling waterstops.

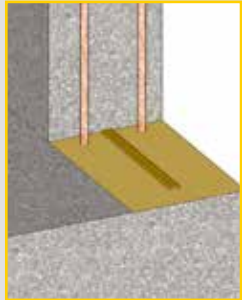
Usage: Horizontal and Vertical Construction Joints

Products: Krytonite Swelling Waterstop (secured w/ Krytonite Adhesive)

Features: Exceptional swelling performance (+1000%) ▪ Proven to stop at least 8 bar of hydrostatic pressure ▪ Fills gaps, voids and contours in concrete to stop water from passing ▪ Maintains cohesive state after repeated wet / dry cycles

Note: like all single protection waterstops, outboard rebar is NOT protected.

DOUBLE PROTECTION



Double Protection: When a permanent, long term, hydrostatic waterproofing solution is needed

Superior swelling pressure and performance combined with Krystol technology delivered through a slurry treatment that ensures permanent waterproofing protection.

Usage: Horizontal and Vertical Construction Joints

Products: Krystol Waterstop Treatment & Krytonite Swelling Waterstop (secured w/ Krytonite Adhesive)

Features: Double protection against water ▪ Protects outboard facing rebar ▪ Preformed material, easy installation ▪ Exceptional swelling waterstop performance ▪ Immediate waterstop

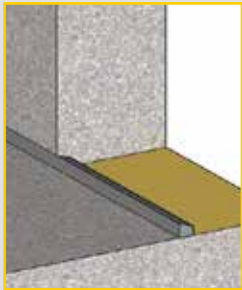


Krystol technology delivered through an internally placed, triangle shaped, waterstop and a slurry treatment that ensures permanent waterproofing protection.

Usage: Horizontal Construction Joints

Products: Krystol Waterstop Treatment & Krystol Waterstop Grout

Features: Double protection against water ▪ Protects outboard facing rebar ▪ Easily conforms to rough joint surfaces ▪ Easy/flexible installation ▪ Difficult to damage after hardened ▪ NSF 61 certified



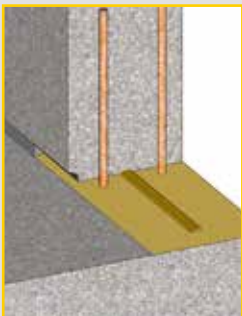
Krystol technology delivered through a slurry treatment and external waterstop that ensures permanent waterproofing protection.

Usage: Horizontal and Vertical Construction Joints

Products: Krystol Waterstop Treatment & Krystol Waterstop Grout

Features: Double protection against water ▪ Protects outboard facing rebar ▪ Keyway can be filled anytime after removing form ▪ Easy/flexible installation ▪ Eliminates difficulties around congested rebar ▪ NSF 61 certified

TRIPLE PROTECTION



Triple Protection: Use on high risk, critical projects

The ultimate construction joint. Superior swelling pressure and performance combined with Krystol technology that is delivered through a slurry treatment and an external waterstop that ensures permanent waterproofing protection.

Usage: Horizontal and Vertical Construction Joints

Products: Krystol Waterstop Treatment & Krystol Waterstop Grout & Krytonite Swelling Waterstop (secured w/ Krytonite Adhesive)

Features: Triple protection against water ▪ Protects outboard facing rebar ▪ High-risk waterproofing ▪ Immediate and permanent joint protection

CONSTRUCTION JOINTS AND DETAILS

Pipe Penetrations



Krystol technology delivered through an externally placed waterstop that ensures permanent waterproofing protection.

Products: Krystol Waterstop Grout

Features: Keyway can be chiseled or formed ▪ Keyway can be filled anytime after removing form ▪ Allows for easy and flexible installation ▪ Eliminates difficulties around congested rebar ▪ NSF 61 certified

Tie Holes



Krystol technology delivered through an externally placed waterstop that ensures permanent waterproofing protection.

Products: Krystol Waterstop Grout

Features: Tie Holes can be filled anytime after removing form ▪ Allows for easy and flexible installation ▪ NSF 61 certified products

Control Joints



Kryton's Crack Inducing Waterstop creates a controlled crack, then introduces Krystol technology through an externally placed waterstop that ensures permanent waterproofing protection.

Usage: Blindside Applications and Shotcrete Shoring walls

Products: Kryton Crack Inducing Waterstop & Krystol Waterstop Grout

Features: Crack control for blindside applications ▪ Ridged PVC waterstop ▪ Double protection against water ▪ Keyway can be filled anytime after removing form



Aligned keyways create a controlled crack to introduce Krystol technology through two external waterstops that ensure permanent waterproofing protection.

Usage: Backfilled walls, where access is available.

Products: Krystol Waterstop Grout

Features: Double protection against water ▪ Keyway can be filled anytime after removing form ▪ NSF 61 certified products

KRYSTOL LEAK REPAIR SYSTEM

The Krystol Leak Repair System is a permanent crystalline waterproofing solution used for repairing leaking cracks, holes and joints found in concrete. It reliably stops high water flow, even under high-hydrostatic pressure, and outperforms injection systems. Repairing leaks is a simple process that involves preparing a chase by chiseling into the concrete, stopping flowing water with Krystol Plug, and then filling the chase flush to the surface with Krystol Repair Grout.

After completing the leak repair, the Krystol T1 & T2 Waterproofing System will protect the entire structure against the continued ingress of water and further concrete deterioration, as well as reduce the likelihood of further leaks developing in the structure.

How It Works

The Krystol Leak Repair System and Krystol T1 & T2 Waterproofing System contain Krystol technology. When applied to concrete, Krystol chemically reacts with water and un-hydrated cement particles to form insoluble needle-shaped crystals that fill capillary pores and micro-cracks in the concrete and block the pathways for water and waterborne contaminants. Any moisture introduced over the lifespan of the concrete will initiate crystallization, ensuring permanent waterproofing protection.

Product Benefits

- Permanent leak repair solution
- Simple and easy installation
- Reduces call-backs
- Effective repair from the positive or negative side
- More reliable than injection systems

Packaging

Krystol Plug, Krystol Repair Grout are available in 25 kg (55 lbs) resealable pails



Use the Krystol Leak Repair System to stop water and repair leaking concrete, including:

- Construction joints
- Pipes and metal fixtures in concrete
- Spalled or honeycombed concrete
- Leaking cracks in concrete



Governors Island Seawall, New York, New York



The Pearl-Qatar, Doha, Qatar

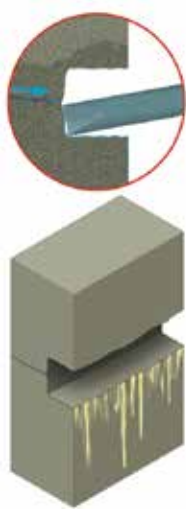


Madushan Dam, Yunnan Province, China

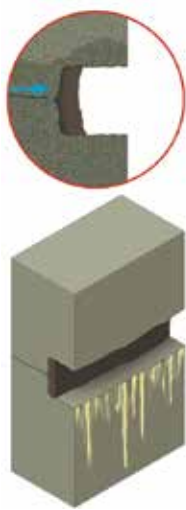
CONCRETE REPAIR WITH THE KRYSTOL LEAK REPAIR SYSTEM

At best, concrete cracks are just an unattractive nuisance. At worst, they lead to leaks that can damage the interior of the building, corrode steel reinforcements and ultimately shorten the life of the concrete structure.

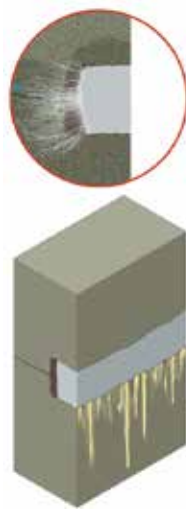
Kryton's Krystol Concrete Waterproofing System is the best way to repair leaking cracks and create durable, waterproof structures.



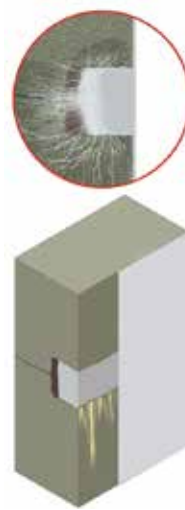
Step 1:
Prepare the crack or joint.



Step 2:
Stop flowing water with Krystol Plug.



Step 3:
Install Krystol Repair Grout.



Step 4:
Apply Krystol T1 to the surface.



“For a long time, the basement of these two buildings would flood with up to a foot of water, especially at high tide. About 6 months ago, the elevator pits, storage room, boiler room and compacting room were all waterproofed using the Kryton Krystol waterproofing system, ...”



“For the first time, we have a substantially dry basement area, and the results have been excellent. I would recommend these products.”



- George Dambakly, Manhattan Apartments, New York, USA

KRYSTOL BARI-COTE™

Krystol Bari-Cote is a high-strength crystalline concrete waterproofing top coat used to resurface and repair concrete or masonry. Krystol Bari-Cote is commonly used as a waterproofing parge coat for spalled or honeycombed concrete, or as a waterproof plaster on masonry walls, where a higher compressive strength surface is required.

How It Works

Krystol Bari-Cote contains Krystol technology. When applied to concrete, Krystol chemically reacts with water and un-hydrated cement particles to form needle-shaped crystals that fill capillary pores and micro-cracks in the concrete and permanently block the pathways for water and waterborne contaminants. Any moisture introduced over the lifespan of the concrete will initiate crystallization, ensuring permanent waterproofing protection.

Product Benefits

- Superior bonding
- High compressive strength
- Permanent waterproofing repair
- Safe for contact with potable water
- Easy and reliable to use

Packaging

25 kg (55 lb.) resealable pails



Krystol Bari-Cote is used to resurface and repair concrete or masonry, making it waterproof for the life of the structure.



Oakland Zoo Tiger Pool, Oakland, USA



Royal Mills Riverpoint Apartments, Rhode Island, USA



Vancouver Pavilion, Shanghai, China

HYDROSTOP RESTORE & PROTECT SYSTEM™

Hydrostop Restore & Protect System is used to restore the appearance and create a durable and waterproof barrier that protects aging concrete infrastructure and buildings, as well as mortar rendered structures, against water intrusion.

Hydrostop Restore & Protect System includes Hydrostop Grout, Hydrostop Coating and Hydrostop Sealer. It is intended for above grade applications to extend the lifespan of aging infrastructure and buildings.

How It Works

Cracks and surface defects are treated and filled using Hydrostop Grout. Hydrostop Coating is then placed to restore or create a uniformed white or grey colored appearance. Finally, Hydrostop Sealer is used to seal and protect the coatings against moisture intrusion.

Product Benefits

- Improves aesthetics
- Extends the life of aging infrastructure
- Delays building replacement
- Reduces maintenance and repair costs
- Easy to use system

Packaging

Hydrostop Grout

- 18 kg (40 lbs) resealable pails

Hydrostop Coating

- Part A: 12.7 kg (28 lbs) pails
- Part B: 3.8 L (1 gal) jugs
- Total kit size: 16.5 kg (36 lbs)

Hydrostop Sealer

- 18.9 L (5 US gallons) pails



*Hydrostop is Hydopel™ in USA



BC Hydro's Bridge River Complex, Canada

Extend the lifespan of aging concrete infrastructure such as hydroelectric facilities and transportation structures.

Restore and protect aging concrete buildings such as churches, mosques, and any other concrete or mortar rendered finish.

Hydrostop Restore & Protect was developed originally for BC Hydro in British Columbia, Canada during the repair and restoration of the Bridge River complex, which includes a dam, powerhouse and generating station.

“*The Hydrostop System is a cost effective way to extend the life of concrete that is showing signs of deterioration due to continual ingress of water*”
– Rob Emlyn, Project Manager for WRDE Management Ltd.

WE'VE GOT YOU COVERED.

Build Confidently with Kryton.

Kryton offers the best-in-category warranty that guarantees Krystol-treated areas of your structure will remain watertight during the warranty period. Our standard warranties include the leading 25-year warranty for our Krystol Internal Membrane (KIM) admixture and 10-year warranty for our surface applied products. Want further assurance? Kryton has the only crystalline waterproofing admixture associated with projects that have successfully outlived their warranties.






All Kryton products are covered by our standard warranty, which guarantees every product is free from defects of manufacture.



The Boeing Development Center was constructed using KIM in 1983 and has outlived its product warranty.

Industry Expertise

Kryton not only meets industry standards such as ICC-ES and NSF International, but continue to raise them. We work with industry, academic and government bodies around the world to develop certification standards and testing methodologies.

	<p>British Board of Agreement (BBA) – No 05/4217 Krystol Internal Membrane (KIM) a reactive crystalline admixture used to provide watertight concrete.</p>
	<p>European CE Mark (CE) – Krystol Internal Membrane (KIM) meets all applicable European Union directives, safety guidelines and quality standards.</p>
	<p>NSF – Krystol products are certified by NSF to NSF/ANSI standard 61 Drinking Water System Components — Health Effects. NSF is a widely respected worldwide certification provider that develops national standards for food, indoor air, environment and water.</p>
	<p>GB Standard – Chinese national standards issued by the Standardization Administration of China (SAC), the Chinese National Committee of the ISO and IEC. Mandatory standards are prefixed “GB”.</p>
	<p>Dubai Municipality (UAE) – Krystol Internal Membrane (KIM) has received a “Technical Approval Certificate” from the Dubai Central Laboratory Department as a concrete admixture to enhance water resistance and durability of concrete.</p>
	<p>International Code Council - Evaluation Service (ICC-ES) – Krystol Internal Membrane (KIM) was the first chemical concrete admixture certified by ICC-ES, a non-profit U.S. organization that reviews and evaluates building products, materials and methods to ensure they comply with applicable building codes.</p>

KRYTON HAS YOUR SOLUTION

Kryton products are proven in the harshest environments from buildings to dams to tunnels, our products work from the outside in and inside out, to seal cracks and improve the durability of concrete structures.

	WATERPROOFING ADMIXTURES		SURFACE APPLIED WATERPROOFING			CONSTRUCTION JOINTS AND DETAILS	CONCRETE REPAIR		RESTORE AND PROTECT
	Krytol Internal Membrane™	Krytol Mortar Admixture™	Krytol Broadcast™	Krytol T1® & T2® Waterproofing System	Hydrostop™ Sealer	Krytol® Waterstop System	Krytol® Leak Repair System	Krytol Bari-Cote™	Hydrostop Restore & Protect System™

New Construction										
HYDROSTATIC	Water reservoirs & tanks	■		■	■		■			
	Dams	■		■	■		■			
	Wastewater treatment plants	■		■	■		■			
	Aquariums	■		■	■		■			
	Water features	■		■	■		■			
	Swimming pools	■		■	■		■			
	Green roofs	■		■	■		■			
	Tunnels	■		■	■		■			
	Underground parking garages	■		■	■		■			
	Brick, block & stone masonry exteriors		■			■				
	Bridge decks & support structures	■			■	■	■			
	Foundations and basements	■		■	■		■			
	Marine structures	■		■	■		■			
	Elevator pits	■		■	■		■			
	Shotcrete	■			■		■			
	Precast	■			■		■			
Above grade	■	■	■	■	■	■	■		■	
Existing Construction										
HYDROSTATIC	Water reservoirs & tanks				■			■	■	
	Dams				■			■	■	
	Wastewater treatment plants				■			■	■	
	Aquariums				■			■	■	
	Water features				■			■	■	
	Swimming pools				■			■	■	
	Green roofs				■			■	■	
	Tunnels				■			■	■	
	Underground parking garages				■	■		■	■	
	Brick, block & stone masonry exteriors		■		■	■			■	■
	Bridge decks & support structures				■	■		■	■	
	Foundations and basements				■			■	■	
	Marine structures				■	■		■	■	
	Elevator pits				■			■	■	
	Hydroelectric facilities				■			■	■	■
	Transportation structures				■			■	■	■
Above grade		■		■	■		■	■	■	

Kryton's global network includes staff in Canada, USA, UK, UAE, India, China, Singapore, as well as Distributors in over 50 countries. To find a Kryton office near you please visit: www.kryton.com



Kryton International Inc.

1645 East Kent Avenue North
Vancouver, BC Canada V5P 2S8
Tel: +1.604.324.8280
Fax: +1.604.324.8899
Toll Free: 1.800.267.8280 (US & Canada only)
Email: info@kryton.com
www.kryton.com



BE SURE. BE KRYTON.