



FOAMGLAS® W+F

Page: 1 Date: 15.04.2013 Supersedes: 01.02.11 www.foamglas.com



FOAMGLAS® W+F

Form of delivery (content per package)

length x width [mm]	600 x 450											
	thickness [mm]	40	50	60	70	80	90	100	110	120	130	140
units	12	10	8	7	6	6	5	5	4	4	4	
square metre [m ²]	3,24	2,70	2,16	1,89	1,62	1,62	1,35	1,35	1,08	1,08	1,08	

Other dimensions and thicknesses are available on request.

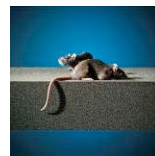
General FOAMGLAS® Cellular Glass Insulation characteristics

- Description : FOAMGLAS® Insulation is manufactured from specially graded recycled glass (≥ 60%) and natural raw materials which are available in abundant supply (sand, dolomite, lime...). The insulation is totally inorganic, contains no ozone depleting propellants, flame resistant additives or binders. Without VOC or other volatile substances.
- Reaction to fire (EN 13501-1) : Material complying with Euroclass A1, non-combustible, no toxic fumes
- Service temperature limits : from -265°C to +430°C
- Water vapour resistance (EN ISO 10456) : $\mu = \infty$
- Hygroscopicity : zero
- Capillarity : zero
- Melting point (cf DIN 4102-17) : >1000 C°
- Thermal expansion coefficient (EN 13471) : $9 \times 10^{-6} \text{ K}^{-1}$
- Specific heat (EN ISO 10456) : 1000 J/(kg·K)

FOAMGLAS® characteristics



Waterproof



Resistant to attack



High compressive strength



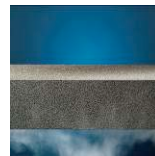
Acid resistant / chemical resistant



Easy cut to shape



Non-combustible



Impervious to water vapour



Dimensionally stable



Ecological



Radon protection



FOAMGLAS® W+F

Page: 2

Date: 15.04.2013

Supersedes: 01.02.11

www.foamglas.com

1. Product characteristics according to EN 13167 ¹⁾

Density (± 10%) (EN 1602)	: 100 kg/m ³
Thickness (EN 823) ± 2 mm	: from 40 to 140 mm
Length (EN 822) ± 2 mm	: 600 mm (half slabs 300 mm long also available)
Width (EN 822) ± 2 mm	: 450 mm
Thermal conductivity (EN ISO 10456)	: $\lambda_D \leq 0.038$ W/(m·K)
Reaction to fire (EN 13501-1)	: Euroclass A1
Compressive strength (EN 826 annexe A)	: CS ≥ 400 kPa
Tensile strength (EN 1607)	: TR ≥ 100 kPa

¹⁾ CE-marking ensures conformity with the mandatory essential requirements of CPD as mentioned in EN 13167; within the CEN Keymark certification all mentioned characteristics are certified by an empowered, notified and accredited 3rd party.

2. Additional product data

Thermal diffusivity at 0°C	: 4.4×10^{-7} m ² /sec
λ_D -value and mean t° range (EN ISO 13787)	: + 35 °C ≤ 0.042 W/(m·K)
Product Conformity BS EN 13167 : 2001	: Nr. CL 07020029
BRE Green Guide Rating	: A+
Natureplus certificate	: 0406-1101-101-1
Green Spec® Listed	: yes

3. Applications

No compressive strength requirements, insulation of:

- façades
- walls, interior insulation (behind brick lining or metal stud constructions)