

# Lastois fh-cv

## elastomer resin based waterproofing covering

### Description:

LASTOIS FH-CV is a one component product, elastomer and plastic resin based with additives and high waterresistant pigments. It is used as external waterproofing covering.

### Uses:

It is ideal for waterproofing and decorating in facades. In certain cases, it also used for waterproofing on passable decks. It is also applied as finishing coat for LASTOIS CAPA INTERMEDIA.

### Application:

- Stir the content of to homogenize properly the product.
- Prime with IMPRIMAIS M.U. (old and polished wall).
- Once the primer dries, apply the first coating of LASTOIS CAPA INTERMEDIA using a woollen or threaded paint roller.
- It can be then reinforced with VELAIS fibreglass using a roller until embed it fully by overlapping up to 2 cm., avoiding any wrinkles or air bags.
- Once dry, apply LASTOIS FH-CV using an average porous sponge roller( to obtain a textured effect and to hide the overlapping layers).
- LASTOIS FH-CV also can be used without a previous application of LASTOIS capa intermedia, but in these cases, continuous membranes are not achieved although becomes an high quality coating even more than the conventional paints applied on facades.



- EXCELLENT WATERPROOFING PROPERTIES
- INCREASED ELASTICITY
- OPTIMUM ADHERENCE
- COLOUR DURABILITY IS ENSURED
- RESISTANT TO UV RADIATION

Packaging: 5Kg, 20Kg  
Coverage: 1.8 m2 per kg in 300 micron coating.





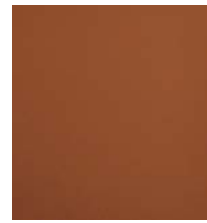
**1E-100**  
***intense ash wood***



**2E-100**  
***intense albero***



**3E-100**  
***intense siena***



**4E-100**  
***intense amphora***



**5E-100**  
***intense date***



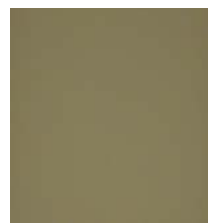
**6E-100**  
***intense colonial***



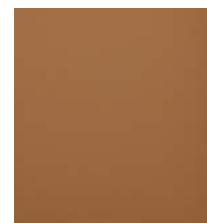
**1E-150**  
***medium ash wood***



**2E-150**  
***medium albero***



**3E-150**  
***medium siena***



**4E-150**  
***medium amphora***



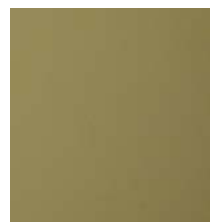
**5E-150**  
***medium date***



**6E-150**  
***medium colonial***



**1E-200**  
***light ash wood***



**3E-200**  
***light albero***



**3E-200**  
***light siena***



**4E-200**  
***light amphora***



**5E-200**  
***light date***



**6E-200**  
***light colonial***



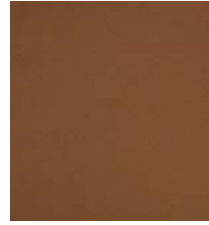
*Orientative colour chart, for a more precise approximation consult the physical sample.*



*7E-100  
intense night*



*8E-100  
intense harvest*



*9E-100  
intense soil*



*10E-100  
intense tropic*



*11E-100  
intense bamboo*



*12E-100  
intense tide*



*7E-150  
medium night*



*8E-150  
medium harvest*



*9E-150  
medium soil*



*10E-150  
medium tropic*



*11E-150  
medium bamboo*



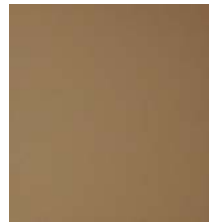
*12E-150  
medium tide*



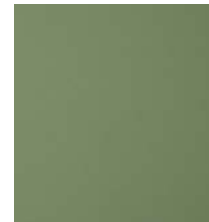
*7E-200  
light night*



*8E-200  
light harvest*



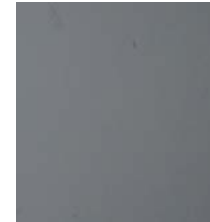
*9E-200  
light soil*



*10E-200  
light tropic*



*11E-200  
light bamboo*



*12E-200  
light tide*

*Orientative colour chart, for a more precise approximation consult the physical sample.*





lastois fh-cv

ELASTOMER RESIN BASED WATERPROOFING COVERING



lastois fh-cv

ELASTOMER RESIN BASED WATERPROOFING COVERING

Edition: 5 04/2010

Technical department Edition: 5 04/2010

Technical department

### Description:

LASTOIS FH-CV is a one component product, elastomer and plastic resin based with additives and high water-resistant pigments. It is used as external waterproofing covering.

### Uses:

It is ideal for waterproofing and decorating in facades. In certain cases, it also used for waterproofing on passable decks. It is also applied as finishing coat for LASTOIS CAPA INTERMEDIA.

### Features & benefits:

EXCELLENT WATERPROOFING PROPERTIES\* INCREASED ELASTICITY\* OPTIMUM ADHERENCE\* COLOUR DURABILITY IS ENSURED\* RESISTANT TO UV RADIATION\*.

### Surface preparation:

The background should be clean, grease, oil and dust free, providing a sound and compact surface with no trace of efflorescence and chippings.

### Clean up:

Tools must be cleaned with plenty of water before the product sets. Once dry, clean mechanically.

### Application

- Stir the content of to homogenize properly the product.
- Prime with IMPRIMAIS M.U. (old and polished wall).
- Once the primer dries, apply the first coating of LASTOIS CAPA INTERMEDIA using a woollen or threaded paint roller.
- It can be then reinforced with VELAIS fibreglass using a roller until embed it fully by overlapping up to 2 cm., avoiding any wrinkles or air bags.
- Once dry, apply LASTOIS FH-CV using an average porous sponge roller (to obtain a textured effect and to hide the overlapping layers).
- LASTOIS FH-CV also can be used without a previous application of LASTOIS capa intermedia, but in these cases, continuous membranes are not achieved although becomes an high quality coating even more than the conventional paints applied on facades.

### Packaging:

Available in packs of:  
Blue, green.

5 Kilos  
20 Kilos

Moss-green, brown, red, black.

5 Kilos  
20 Kilos

White, creme-colour, salmon, ivory-colour, grey, ochre y coral.

5 Kilos

The information provided on this technical data sheet and particularly the recommendations for the application and use of the product is based on our current knowledge and are provided in good faith, considering that the products are used, handled and stored under normal conditions and within the limits of its useful life. The possible differences between the materials, supports, and real conditions in the application site can be so important that it is no possible to establish a warranty with this document or any other information provided. The user must verify with a suitability test that the product conforms to the required use. Users should refer to the information included in the last technical data sheet edition.



PROFESSIONAL CONSTRUCTIVE SOLUTIONS  
©TEAIS S.A. - All rights reserved - Avda. da Enerxia, nº 153, Pol. Ind. de Sabón - 15143 Arteixo, A Coruña  
Telf.: 981 602 111 - Fax: 981 601 508 - Email: comex@teais.es



PROFESSIONAL CONSTRUCTIVE SOLUTIONS  
©TEAIS S.A. - All rights reserved - Avda. da Enerxia, nº 153, Pol. Ind. de Sabón - 15143 Arteixo, A Coruña  
Telf.: 981 602 111 - Fax: 981 601 508 - Email: comex@teais.es

20 Kilos

### Storage:

It is recommended to store this product for 2 years in tightly closed original packages in a cool dry place.

### Health and safety advice:

Consult the safety information on the label on each package, and for more information refer to the product Material Safety Data Sheet.

### Coverage:

1.8 m2 per kg in 300 micron coating.

