



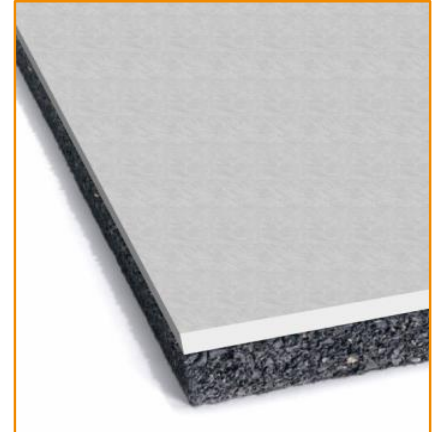
TECHNICAL DATA

Mustwall B

Acoustic and thermal insulation for line existing walls and ceilings

Technical specification

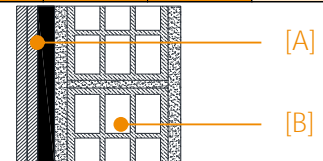
Pre-assembled ... mm-thick acoustic insulation panels, made of a ... mm-thick SBR (Stirene Butadiene Rubber) rubber granules layer, assembled with a 12.5 mm-thick plasterboard. The panels dimensions are 1.20 m width x 2.00 m length.



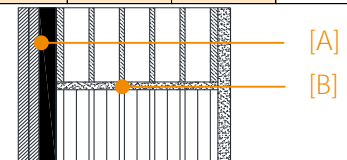
- **thermal and sound insulating**
- **long term durability**
- **stability**

PHYSICAL CHARACTERISTICS	Standard	Unit	18B	23B	33B	Tolerance
Thickness		mm	20	23	33	± 2
Length		m	2,00			± 0,005
Width		m	1,20			± 0,005
Superficial weight		kg/m ²	14,5	16,6	23,6	± 5%
Colour			black / white			

ACOUSTIC CHARACTERISTICS	Standard	Unit	18B	23B	33B	Tolerance
Wall composition - certified						
A: covering with Mustwall ...B and an additional gypsumboard 12.5 mm						[A]
B: hollow brick wall 12 cm (12/25/25), with plaster 1.5 cm on both sides						[B]



Transmission Loss Rw ⁽¹⁾	EN ISO 10140	dB	-	-	54	
Wall composition - certified						
A: covering with Mustwall ...B and an additional gypsumboard 12.5 mm						[A]
B: perforated brick wall 20 cm (20/25/19); plaster 1.5 cm						[B]



Transmission Loss Rw ⁽¹⁾	EN ISO 10140	dB	55	57	60	
-------------------------------------	--------------	----	----	----	----	--

TECHNICAL CHARACTERISTICS	Standard	Unit	18B	23B	33B	Tolerance
Thermal resistance R	EN 12667	m ² K/W	0,104	0,146	0,229	
Fire grade	EN 13501-1		F			

PACKING AND STORING

Each pallet is wrapped and protected with waterproof polythene film. Inside storage is recommended to avoid possible wet storing.

⁽¹⁾ Values obtained in Isolgomma acoustic laboratory.

The suggestions and technical information given above represent our knowledge regarding the properties and the product's uses. ISOLGOMMA reserve the right to modify or update this data without prior notice. This document is the property of ISOLGOMMA and all rights are therefore reserved.



TECHNICAL DATA

Mustwall B

Acoustic and thermal insulation for line existing walls and ceilings

INSTALLATION INSTRUCTIONS

FLOOR INSULATION



Install the edging strip to the walls and install the panels on the floor with the rubber side to the top



Seal the junctions between the panels with the Stik tape



Build the screed



Fix the second gypsum board by gluing dots or screwing it on centre line and on the side borders with double thread screw.



Apply the plastic mesh tape in the gypsum boards jointing lines.



Grouting COATED CEILING

COATED CEILING



Attach the metal frame along the upper perimeter of the room



Drill the ceiling e fix the acoustic bracket



Fix the metal stud to the acoustic bracket



Lean the Mustwall B panel to the metal frame



Fix the Mustwall B panel to the metal frame with 55 mm screws every 15 cm



Apply the plastic mesh tape in the gypsum boards jointing lines and grouting